

Treasury Management Strategy Statement

Minimum Revenue Provision Policy Statement and Annual Investment Strategy

East Cambridgeshire District Council
2024/25

INDEX

Key Considerations	3
1.1 Background.....	6
1.2 Reporting Requirements.....	6
1.3 Treasury Management Strategy for 2024/25	7
1.4 Training	8
1.5 Treasury Management Consultants.....	9
2. THE CAPITAL PRUDENTIAL INDICATORS 2024/25 – 2026/27	10
2.1 Capital Expenditure and Financing.....	10
2.2 The Council’s Borrowing Need (the Capital Financing Requirement)	10
2.3 Liability Benchmark	11
2.4 Core Funds and Expected Investment Balances.....	12
2.5 Minimum Revenue Provision (MRP) Policy Statement.....	12
3. BORROWING	14
3.1 Current Portfolio Position	14
3.2 Treasury Indicators: Limits to Borrowing Activity.....	15
3.3 Prospects for Interest Rates.....	16
3.4 Borrowing Strategy	18
3.5 Policy on Borrowing in Advance of Need	19
3.6 New Financial Institutions as a Source of Borrowing and / or Types of Borrowing	19
3.7 Approved Sources of Long and Short-term Borrowing	19
4 ANNUAL INVESTMENT STRATEGY.....	20
4.1 Investment Policy – Management of Risk.....	20
4.2 Creditworthiness Policy	22
4.3 Investment Strategy	23
4.4 Investment Performance / Risk Benchmarking	25
4.5 End of Year Investment Report.....	25
5 APPENDICES	26
5.1 THE CAPITAL PRUDENTIAL AND TREASURY INDICATORS 2024/25 – 2026/27	27
5.2 ECONOMIC BACKGROUND.....	28
5.3 TREASURY MANAGEMENT PRACTICE – CREDIT AND COUNTERPARTY RISK MANAGEMENT	32
5.4 APPROVED COUNTRIES FOR INVESTMENTS.....	33
5.5 TREASURY MANAGEMENT SCHEME OF DELEGATION	34
5.6 THE TREASURY MANAGEMENT ROLE OF THE SECTION 151 OFFICER.....	35

Key Considerations

2021 revised CIPFA Treasury Management Code and Prudential Code – changes which will impact on future TMSS/AIS reports and the risk management framework

CIPFA published the revised Codes on 20th December 2021 and stated that revisions need to be included in the reporting framework from the 2023/24 financial year. This Council, therefore, has to have regard to these Codes of Practice when it prepares the Treasury Management Strategy Statement and Annual Investment Strategy, and also related reports during the financial year, which are taken to Full Council for approval.

The revised Treasury Management Code required all investments and investment income to be attributed to one of the following three purposes: -

Treasury management

Arising from the organisation's cash flows or treasury risk management activity, this type of investment represents balances which are only held until the cash is required for use. Treasury investments may also arise from other treasury risk management activity which seeks to prudently manage the risks, costs or income relating to existing or forecast debt or treasury investments.

Service delivery

Investments held primarily and directly for the delivery of public services including housing, regeneration and local infrastructure. Returns on this category of investment which are funded by borrowing are permitted only in cases where the income is "either related to the financial viability of the project in question or otherwise incidental to the primary purpose".

Commercial return

Investments held primarily for financial return with no treasury management or direct service provision purpose. Risks on such investments should be proportionate to a council's financial capacity – i.e., that 'plausible losses' could be absorbed in budgets or reserves without unmanageable detriment to local services. A council must not borrow to invest primarily for financial return.

The revised Treasury Management Code requires a council to implement the following: -

1. **Adopt a liability benchmark treasury indicator** to support the financing risk management of the capital financing requirement; this is to be shown in chart form for a minimum of ten years, with material differences between the liability benchmark and actual loans to be explained;
2. **Long-term treasury investments**, (including pooled funds), are to be classed as commercial investments unless justified by a cash flow business case;
3. **Pooled funds** are to be included in the indicator for principal sums maturing in years beyond the initial budget year;
4. Amendment to the **knowledge and skills register** for officers and members involved in the treasury management function - to be proportionate to the size and complexity of the treasury management conducted by each council;
5. **Reporting to members is to be done quarterly**. Specifically, the Chief Finance Officer (CFO) is required to establish procedures to monitor and report

performance against all forward-looking prudential indicators at least quarterly. The CFO is expected to establish a measurement and reporting process that highlights significant actual or forecast deviations from the approved indicators. However, monitoring of prudential indicators, including forecast debt and investments, is not required to be taken to Full Council and should be reported as part of the council's integrated revenue, capital and balance sheet monitoring;

6. **Environmental, social and governance (ESG)** issues to be addressed within a council's treasury management policies and practices (TMP1).

The main requirements of the Prudential Code relating to service and commercial investments are: -

1. The risks associated with service and commercial investments should be proportionate to their financial capacity – i.e. that plausible losses could be absorbed in budgets or reserves without unmanageable detriment to local services;
2. A council must not borrow to invest for the primary purpose of commercial return;
3. It is not prudent for local authorities to make any investment or spending decision that will increase the CFR, and so may lead to new borrowing, unless directly and primarily related to the functions of the council, and where any commercial returns are either related to the financial viability of the project in question or otherwise incidental to the primary purpose;
4. An annual review should be conducted to evaluate whether commercial investments should be sold to release funds to finance new capital expenditure or refinance maturing debt;
5. A prudential indicator is required for the net income from commercial and service investments as a proportion of the net revenue stream;
6. Create new Investment Management Practices to manage risks associated with non-treasury investments, (similar to the current Treasury Management Practices).

A Council's Capital Strategy or Annual Investment Strategy should include: -

1. The council's approach to investments for service or commercial purposes (together referred to as non-treasury investments), including defining the council's objectives, risk appetite and risk management in respect of these investments, and processes ensuring effective due diligence;
2. An assessment of affordability, prudence and proportionality in respect of the council's overall financial capacity (i.e., whether plausible losses could be absorbed in budgets or reserves without unmanageable detriment to local services);
3. Details of financial and other risks of undertaking investments for service or commercial purposes and how these are managed;
4. Limits on total investments for service purposes and for commercial purposes respectively (consistent with any limits required by other statutory guidance on investments);
5. Requirements for independent and expert advice and scrutiny arrangements (while business cases may provide some of this material, the information

contained in them will need to be periodically re-evaluated to inform the council's overall strategy);

6. State compliance with paragraph 51 of the Prudential Code in relation to investments for commercial purposes, in particular the requirement that a council must not borrow to invest primarily for financial return.

As this TMSS and AIS deals solely with treasury management investments, the categories of service delivery and commercial investments should be addressed as part of the Capital Strategy report.

1.1 Background

The Council is required to operate a balanced revenue budget, which broadly means that cash raised during the year will meet cash expenditure. Part of the treasury management operation is to ensure that this cash flow is adequately planned, with cash being available when it is needed. Surplus monies are invested in low-risk counterparties or instruments commensurate with the Council's low risk appetite, providing adequate liquidity initially before considering investment return.

The second main function of the treasury management service is the funding of the Council's capital plans. These capital plans provide a guide to the borrowing need of the Council, essentially the longer-term cash flow planning, to ensure that it can meet its capital spending obligations. This management of longer-term cash may involve arranging long or short-term loans or using longer-term cash flow surpluses. On occasion, when it is prudent and economic, any debt previously drawn may be restructured to meet risk or cost objectives.

The contribution the treasury management function makes to the Council is critical, as the balance of debt and investment operations ensure liquidity or the ability to meet spending commitments as they fall due, either on day-to-day revenue or for larger capital projects. The treasury operations will see a balance of the interest costs of debt and the investment income arising from cash deposits affecting the available budget. Since cash balances generally result from reserves and balances, it is paramount to ensure adequate security of the sums invested, as a loss of principal will in effect result in a loss to the General Fund Balance.

CIPFA defines treasury management as:

“The management of the local authority's borrowing, investments and cash flows, including its banking, money market and capital market transactions; the effective control of the risks associated with those activities; and the pursuit of optimum performance consistent with those risks.”

Whilst any commercial initiatives or loans to third parties will impact on the treasury function, these activities are generally classed as non-treasury activities, (arising usually from capital expenditure), and are separate from the day-to-day treasury management activities.

1.2 Reporting Requirements

1.2.1 Capital Strategy

The CIPFA 2021 Prudential and Treasury Management Codes require all local authorities to prepare a Capital Strategy report which will provide the following: -

- a high-level long-term overview of how capital expenditure, capital financing and treasury management activity contribute to the provision of services
- an overview of how the associated risk is managed
- the implications for future financial sustainability

The aim of the strategy is to ensure that all the Council's elected members fully understand the overall long-term policy objectives and resulting Capital Strategy requirements, governance procedures and risk appetite.

1.2.2 Treasury Management Reporting

The Council is currently required to receive and approve, as a minimum, three main treasury reports each year, which incorporate a variety of policies, estimates and actuals.

- a. **Prudential and treasury indicators and treasury strategy** (this report)
 - The first, and most important report is forward looking and covers: -
 - the capital plans, (including prudential indicators)
 - a minimum revenue provision (MRP) policy, (how residual capital expenditure is charged to revenue over time)
 - the Treasury Management Strategy, (how the investments and borrowings are to be organised), including treasury indicators; and
 - an Annual Investment Strategy, (the parameters on how investments are to be managed)

- b. **A mid-year treasury management report** – This is primarily a progress report and will update members on the capital position, amending prudential indicators as necessary, and whether any policies require revision. In addition, this Council will receive quarterly update reports.

- c. **An annual treasury report** – This is a backward-looking review document and provides details of a selection of actual prudential and treasury indicators and actual treasury operations compared to the estimates within the strategy.

Scrutiny

The above reports are required to be adequately scrutinised before being recommended to the Full Council. This role is undertaken by the Finance and Assets Committee.

Quarterly reports – In addition to the three major reports detailed above, from 2023/24 quarterly reporting (end of June/end of December) is also required. However, these additional reports do not have to be reported to Full Council but do require to be adequately scrutinised. This role is undertaken by the Finance and Assets Committee. (The reports, specifically, should comprise updated Treasury/Prudential Indicators.)

1.3 Treasury Management Strategy for 2024/25

The strategy for 2024/25 covers two main areas:

Capital issues

- the capital expenditure plans and the associated prudential indicators
- the minimum revenue provision (MRP) policy

Treasury management issues

- the current treasury position
- treasury indicators which limit the treasury risk and activities of the Council
- prospects for interest rates
- the borrowing strategy
- policy on borrowing in advance of need
- the investment strategy

- creditworthiness policy; and
- the policy on use of external service providers

These elements cover the requirements of the Local Government Act 2003, DLUHC Investment Guidance, DLUHC MRP Guidance, the CIPFA Prudential Code and the CIPFA Treasury Management Code.

1.4 Training

The CIPFA Treasury Management Code requires the responsible officer to ensure that members with responsibility for treasury management receive adequate training in treasury management. This especially applies to members responsible for scrutiny.

Furthermore, pages 47 and 48 of the Code state that they expect “all organisations to have a formal and comprehensive knowledge and skills or training policy for the effective acquisition and retention of treasury management knowledge and skills for those responsible for management, delivery, governance and decision making.

The scale and nature of this will depend on the size and complexity of the organisation’s treasury management needs. Organisations should consider how to assess whether treasury management staff and Council Members have the required knowledge and skills to undertake their roles and whether they have been able to maintain those skills and keep them up to date.

As a minimum, authorities should carry out the following to monitor and review knowledge and skills:

- Record attendance at training and ensure action is taken where poor attendance is identified.
- Prepare tailored learning plans for treasury management officers and Council Members.
- Require treasury management officers and Council Members to undertake self-assessment against the required competencies (as set out in the schedule that may be adopted by the organisation).
- Have regular communication with officers and Council Members, encouraging them to highlight training needs on an ongoing basis.”

Following the elections in May 2023, a Treasury Management training session was offered to all Members as part of their induction. This took place on the 5th October 2023 and was hosted by Fifield Training Limited.

The training needs of treasury management officers are periodically reviewed, two of the officers involved attended online Link Treasury Services Limited webinars during 2023, while the Director, Finance attended the Member session on the 5th October.

A formal record of the training received by officers central to the Treasury function will be maintained by the Director, Finance. Similarly, a formal record of the treasury management / capital finance training received by members will also be maintained by the Director, Finance.

1.5 Treasury Management Consultants

The Council uses Link Group, Link Treasury Services Limited as its external treasury management advisors.

The Council recognises that responsibility for treasury management decisions remains with the organisation at all times and will ensure that undue reliance is not placed upon the services of our external service providers. All decisions will be undertaken with regards to all available information, including, but not solely, our treasury advisers.

It also recognises that there is value in employing external providers of treasury management services to acquire access to specialist skills and resources. The Council will ensure that the terms of their appointment and the methods by which their value will be assessed are properly agreed and documented and subjected to regular review.

2. THE CAPITAL PRUDENTIAL INDICATORS 2024/25 – 2026/27

The Council's capital expenditure plans are the key driver of treasury management activity. The output of the capital expenditure plans is reflected in the prudential indicators, which are designed to assist members' overview and confirm capital expenditure plans are prudent, affordable and sustainable.

2.1 Capital Expenditure and Financing

This prudential indicator is a summary of the Council's capital expenditure plans, both those agreed previously, and those forming part of this budget cycle. Members are asked to approve the capital expenditure forecasts: -

Capital expenditure £000	2022/23 Actual	2023/24 Estimate	2024/25 Estimate	2025/26 Estimate	2026/27 Estimate
Operational Services	996	3,775	4,275	8,472	912
Finance & Assets	7,855	1,063	2,300	0	0
Total	8,851	4,838	6,575	8,472	912

The table below summarises the above capital expenditure plans and how these plans are being financed by capital or revenue resources. Any shortfall of resources results in a funding borrowing need.

Financing of capital expenditure £000	2022/23 Actual	2023/24 Estimate	2024/25 Estimate	2025/26 Estimate	2026/27 Estimate
Capital grants	584	1,007	603	603	603
Capital reserves	313	906	209	209	209
Section 106 / CIL	1,018	900	1,600	7,660	100
Revenue Reserves	1,065	0	0	0	0
Net financing need for the year	5,871	2,025	4,163	0	0

2.2 The Council's Borrowing Need (the Capital Financing Requirement)

The second prudential indicator is the Council's Capital Financing Requirement (CFR). The CFR is simply the total historic outstanding capital expenditure which has not yet been paid for from either revenue or capital resources. It is essentially a measure of the Council's indebtedness and so its underlying borrowing need. Any capital expenditure above, which has not immediately been paid for through a revenue or capital resource, will increase the CFR.

The CFR does not increase indefinitely, as the minimum revenue provision (MRP) is a statutory annual revenue charge which broadly reduces the indebtedness in line with each asset's life, and so charges the economic consumption of capital assets as they are used.

The Council is asked to approve the CFR projections below:

£000	2022/23 Actual	2023/24 Estimate	2024/25 Estimate	2025/26 Estimate	2026/27 Estimate
Capital Financing Requirement					
CFR Brought forward	9,490	10,127	10,833	13,909	6,160
Movement in CFR in year	637	706	3,076	(7,749)	(749)
Total CFR at end of year	10,127	10,833	13,909	6,160	5,411

Movement in CFR represented by					
Net financing need for the year (above)	5,871	2,025	4,162	0	0
Repayment of previous loan to ECTC	(4,900)	(1,000)	(500)	(7,000)	0
Less MRP	(334)	(319)	(586)	(749)	(749)
Movement in CFR	637	706	3,076	(7,749)	(749)

Planned borrowing for capital expenditure purposes conforms to DLUHC requirements for applying for certainty rate borrowing from the PWLB. Borrowing for “projects for yield” schemes automatically disqualify a council from being able to borrow from the PWLB in any year, so this line is required to be nil in all years.

Borrowing £000	2022/23 Actual	2023/24 Estimate	2024/25 Estimate	2025/26 Estimate	2026/27 Estimate
Service spend	(129)	1,825	1,862	0	0
Housing	6,000	200	2,300	0	0
Projects for yield		0	0	0	0
TOTAL	5,871	2,025	4,162	0	0

2.3 Liability Benchmark

The Council is required to estimate and measure the Liability Benchmark (LB) for the forthcoming financial year and the following two financial years, as a minimum.

There are four components to the LB: -

1. **Existing loan debt outstanding:** the Council’s existing loans that are still outstanding in future years.
2. **Loans CFR:** this is calculated in accordance with the loans CFR definition in the Prudential Code and projected into the future based on approved prudential borrowing and planned MRP.
3. **Net loans requirement:** this will show the Council's gross loan debt less treasury management investments at the last financial year-end, projected into the future and based on its approved prudential borrowing, planned MRP and any other major cash flows forecast.
4. **Liability benchmark** (or gross loans requirement): this equals net loans requirement plus short-term liquidity allowance.

Liability Benchmark £000	2022/23 Actual	2023/24 Estimate	2024/25 Estimate	2025/26 Estimate	2026/27 Estimate
External Debt	0	0	0	0	0
Treasury Investments	(29,941)	(27,157)	(20,103)	(17,796)	(16,028)
Net Loan Requirement	(29,941)	(27,157)	(20,103)	(17,796)	(16,028)
Capital Financing Requirement	10,127	10,833	13,909	6,160	5,411
Liquidity Allowance / Buffer	3,000	3,000	3,000	3,000	3,000
Liability Benchmark / Gross Loan Requirement	(26,941)	(24,157)	(17,103)	(14,796)	(13,028)

2.4 Core Funds and Expected Investment Balances

The application of resources (capital receipts, reserves etc.) to either finance capital expenditure or other budget decisions to support the revenue budget will have an ongoing impact on investments unless resources are supplemented each year from new sources (asset sales etc.). Detailed below are estimates of the year-end balances for each resource and anticipated day-to-day cash flow balances.

Year End Resources £000	2022/23 Actual	2023/24 Estimate	2024/25 Estimate	2025/26 Estimate	2026/27 Estimate
Revenue Reserves	14,862	13,766	11,548	9,312	7,054
S106 / CIL	13,903	13,739	12,139	4,479	4,379
Capital receipts	1,481	988	828	668	509
Provisions	1,050	1,050	1,050	1,050	1,050
Council Tax Surplus	325	0	0	0	0
Total core funds	31,621	29,543	25,565	15,509	12,992
Working Capital*	8,447	8,447	8,447	8,447	8,447
Internal Borrowing	(10,127)	(10,833)	(13,909)	(6,160)	(5,411)
Expected investments	29,941	27,157	20,103	17,796	16,028

*Working capital balances shown are estimated year-end; these may be higher mid-year

2.5 Minimum Revenue Provision (MRP) Policy Statement

Under Regulation 27 of the Local Authorities (Capital Finance and Accounting) (England) Regulations 2003, where the Council has financed capital expenditure by borrowing it is required to make a provision each year through a revenue charge (MRP).

The Council is required to calculate a prudent provision of MRP which ensures that the outstanding debt liability is repaid over a period that is reasonably commensurate with that over which the capital expenditure provides benefits. The MRP Guidance (2018) gives four ready-made options for calculating MRP, but the Council can use any other reasonable basis that it can justify as prudent.

The MRP policy statement requires Full Council approval in advance of each financial year.

The Council is recommended to approve the following MRP Statement.

From 1 April 2008 for all unsupported borrowing the MRP policy will be **Asset life method (straight line)** – MRP will be based on the estimated life of the assets;

- Waste Fleet purchased prior to 2023/24 9 years
- Waste Fleet purchased in 2023/24 and future years 7 years
- Other Fleet 9 years
- Leisure Centre 25 years
- Depot 25 years
- Waste Bins 25 years

Loans to ECTC and ECCLT - For capital expenditure on loans to third parties where the principal will be repaid at the end of the loan period, this loan repayment will be used to reduce the CFR at the point of repayment and no MRP will be paid against the capital expenditure in the intervening period. This is consistent with the table in 2.2 above.

Capital expenditure incurred during 2023/24 will not be subject to an MRP charge until 2024/25, or in the year after the asset becomes operational.

MRP Overpayments - Under the MRP guidance, any charges made in excess of the statutory MRP can be made, known as voluntary revenue provision (VRP).

VRP can be reclaimed in later years if deemed necessary or prudent. In order for these amounts to be reclaimed for use in the budget, this policy must disclose the cumulative overpayment made each year.

Cumulative VRP overpayments made to the end of 2023/24 are £384,000.

3. BORROWING

The capital expenditure plans set out in Section 2 provide details of the service activity of the Council. The treasury management function ensures that the Council's cash is organised in accordance with the relevant professional codes, so that sufficient cash is available to meet this service activity and the Council's Capital Strategy. This will involve both the organisation of the cash flow and, where capital plans require, the organisation of appropriate borrowing facilities. The strategy covers the relevant treasury / prudential indicators, the current and projected debt positions, and the Annual Investment Strategy.

3.1 Current Portfolio Position

The overall treasury management portfolio as at 31st March 2023 and for the position as at 31st December 2023 are shown below for both borrowing and investments.

TREASURY PORTFOLIO				
	actual 31.3.23	actual 31.3.23	current 31.12.23	current 31.12.23
Treasury Investments	£000	%	£000	%
Banks – main bank account	441	1.5	688	1.9
Bank – call accounts	22,000	73.5	22,000	61.6
Money Market Funds	7,500	25.0	13,050	36.5
Total Treasury Investments	29,941	100	35,738	100
Total External Borrowing	0	0	0	0
Net Treasury Investments / (Borrowing)	29,941	100	35,738	100

The Council's forward projections for borrowing are summarised below. The table shows the actual external debt, against the underlying capital borrowing need, (the Capital Financing Requirement - CFR), highlighting any over or under borrowing.

£000	2022/23 Actual	2023/24 Estimate	2024/25 Estimate	2025/26 Estimate	2026/27 Estimate
External Debt					
Debt at 1 April	0	0	0	0	0
Expected change in Debt	0	0	0	0	0
Actual gross debt at 31 March	0	0	0	0	0
The Capital Financing Requirement	10,127	10,833	13,909	6,160	5,411
Under / (over) borrowing	10,127	10,833	13,909	6,160	5,411

Within the range of prudential indicators there are several key indicators to ensure that the Council operates its activities within well-defined limits. One of these is that the

Council needs to ensure that its gross debt does not, except in the short-term, exceed the total of the CFR in the preceding year plus the estimates of any additional CFR for 2024/25 and the following two financial years. This allows some flexibility for limited early borrowing for future years but ensures that borrowing is not undertaken for revenue or speculative purposes.

The Director, Finance reports that the Council complied with this prudential indicator in the current year and does not envisage difficulties for the future. This view takes account of current commitments, existing plans and the proposals in this budget report.

3.2 Treasury Indicators: Limits to Borrowing Activity

The Operational Boundary. This is the limit beyond which external debt is not normally expected to exceed. In most cases, this would be a similar figure to the CFR, but may be lower or higher depending on the levels of actual debt and the ability to fund under-borrowing by other cash resources.

Operational Boundary £000	2023/24 Estimate	2024/25 Estimate	2025/26 Estimate	2026/27 Estimate
External Debt	0	0	0	0

The Authorised Limit for external debt. This is a key prudential indicator and represents a control on the maximum level of external borrowing. This represents a legal limit beyond which external debt is prohibited, and this limit needs to be set or revised by the Full Council. It reflects the level of external debt which, while not desired, could be afforded in the short-term, but is not sustainable in the longer-term.

- This is the statutory limit determined under section 3 (1) of the Local Government Act 2003. The Government retains an option to control either the total of all council plans, or those of a specific council, although this power has not yet been exercised.
- The Council is asked to approve the following Authorised Limit:

Authorised Limit £m	2023/24 Estimate	2024/25 Estimate	2025/26 Estimate	2026/27 Estimate
External Debt	10,000	10,000	10,000	10,000

To note: In normal circumstances a Council's Authorised Limit for external debt is higher than its Capital Financing Requirement, however in our case, I have put this as a lower value on the basis that Borrowing will be from internal sources in the first instance, therefore reducing significantly the need to borrow from external sources.

3.3 Prospects for Interest Rates

The Council has appointed Link Group as its treasury advisor and part of their service is to assist the Council to formulate a view on interest rates. Link provided the following forecasts on 08 January 2024. These are forecasts for Bank Rate, average earnings and PWLB certainty rates, gilt yields plus 80 bps.

Link Group Interest Rate View 08.01.24													
	Mar-24	Jun-24	Sep-24	Dec-24	Mar-25	Jun-25	Sep-25	Dec-25	Mar-26	Jun-26	Sep-26	Dec-26	Mar-27
BANK RATE	5.25	5.25	4.75	4.25	3.75	3.25	3.00	3.00	3.00	3.00	3.00	3.00	3.00
3 month ave earnings	5.30	5.30	4.80	4.30	3.80	3.30	3.00	3.00	3.00	3.00	3.00	3.00	3.00
6 month ave earnings	5.20	5.10	4.60	4.10	3.70	3.30	3.10	3.10	3.10	3.10	3.10	3.10	3.10
12 month ave earnings	5.00	4.90	4.40	3.90	3.60	3.20	3.10	3.10	3.10	3.10	3.10	3.20	3.20
5 yr PWLB	4.50	4.40	4.30	4.20	4.10	4.00	3.80	3.70	3.60	3.60	3.50	3.50	3.50
10 yr PWLB	4.70	4.50	4.40	4.30	4.20	4.10	4.00	3.90	3.80	3.70	3.70	3.70	3.70
25 yr PWLB	5.20	5.10	4.90	4.80	4.60	4.40	4.30	4.20	4.20	4.10	4.10	4.10	4.10
50 yr PWLB	5.00	4.90	4.70	4.60	4.40	4.20	4.10	4.00	4.00	3.90	3.90	3.90	3.90

Additional notes by Link on this forecast table: -

- Our central forecast for interest rates was previously updated on 7 November and reflected a view that the MPC would be keen to further demonstrate its anti-inflation credentials by keeping Bank Rate at 5.25% until at least H2 2024. We expect rate cuts to start when both the CPI inflation and wage/employment data are supportive of such a move, and when there is a likelihood of the overall economy enduring at least a slowdown or mild recession over the coming months (although most recent GDP releases have surprised with their on-going robustness).
- Naturally, timing on this matter will remain one of fine judgment: cut too soon, and inflationary pressures may well build up further; cut too late and any downturn or recession may be prolonged.
- In the upcoming months, our forecasts will be guided not only by economic data releases and clarifications from the MPC over its monetary policies and the Government over its fiscal policies, but also international factors such as policy development in the US and Europe, the provision of fresh support packages to support the faltering recovery in China as well as the on-going conflict between Russia and Ukraine, and Gaza and Israel.

PWLB RATES

- The short and medium part of the gilt curve has rallied since the start of November as markets price in a quicker reduction in Bank Rate through 2024 and 2025 than held sway back then. This reflects market confidence in inflation falling back in a similar manner to that already seen in the US and the Euro-zone. At the time of writing there is c70 basis points difference between the 5 and 50 year parts of the curve.

The balance of risks to the UK economy: -

- The overall balance of risks to economic growth in the UK is even.

Downside risks to current forecasts for UK gilt yields and PWLB rates include: -

- **Labour and supply shortages** prove more enduring and disruptive and depress economic activity (accepting that in the near-term this is also an upside risk to inflation and, thus, could keep gilt yields high for longer).

- **The Bank of England** has increased Bank Rate too fast and too far over recent months, and subsequently brings about a deeper and longer UK recession than we currently anticipate.
- **Geopolitical risks**, for example in Ukraine/Russia, the Middle East, China/Taiwan/US, Iran and North Korea, which could lead to increasing safe-haven flows.

Upside risks to current forecasts for UK gilt yields and PWLB rates: -

- Despite the tightening in Bank Rate to 5.25%, the **Bank of England allows inflationary pressures to remain elevated** for a long period within the UK economy, which then necessitates Bank Rate staying higher for longer than we currently project.
- **The pound weakens** because of a lack of confidence in the UK Government's pre-election fiscal policies, which may prove inflationary, resulting in investors pricing in a risk premium for holding UK sovereign debt.
- Projected **gilt issuance, inclusive of natural maturities and QT**, could be too much for the markets to comfortably digest without higher yields compensating.

LINK GROUP FORECASTS

We expect the MPC will keep Bank Rate at 5.25% until the second half of 2024, to combat on-going inflationary and wage pressures, even if they have dampened somewhat of late. We do not think that the MPC will increase Bank Rate above 5.25%.

Gilt yields and PWLB rates

The overall longer-run trend is for gilt yields and PWLB rates to fall back over the timeline of our forecasts, as inflation continues to fall through 2024.

Our target borrowing rates are set **two years forward** (as we expect rates to fall back) and the current PWLB (certainty) borrowing rates are set out below: -

PWLB debt	Current borrowing rate as at 08.01.24 p.m.	Target borrowing rate now (end of Q4 2025)	Target borrowing rate previous (end of Q3 2025)
5 years	4.53%	3.70%	3.80%
10 years	4.67%	3.90%	3.80%
25 years	5.19%	4.20%	4.20%
50 years	4.97%	4.00%	4.00%

Borrowing advice: Our long-term (beyond 10 years) forecast for Bank Rate remains at 3% and reflects Capital Economics' research that suggests AI and general improvements in productivity will be supportive of a higher neutral interest rate. As all PWLB certainty rates are currently significantly above this level, borrowing strategies will need to be reviewed in that context. Overall, better value can be obtained at the shorter end of the curve and short-dated fixed LA to LA monies should be considered. Temporary borrowing rates will remain elevated for some time to come but may prove the best option whilst the market continues to factor in Bank Rate reductions for 2024 and later.

Our suggested budgeted earnings rates for investments up to about three months' duration in each financial year are set out below.

Average earnings in each year	Now	Previously
2023/24 (residual)	5.30%	5.30%
2024/25	4.55%	4.70%
2025/26	3.10%	3.20%
2026/27	3.00%	3.00%
2027/28	3.25%	3.25%
2028/29	3.25%	3.25%
Years 6 to 10	3.25%	3.25%
Years 10+	3.25%	3.25%

As there are so many variables at this time, caution must be exercised in respect of all interest rate forecasts.

Our interest rate forecast for Bank Rate is in steps of 25 bps, whereas PWLB forecasts have been rounded to the nearest 10 bps and are central forecasts within bands of + / - 25 bps. Naturally, we continue to monitor events and will update our forecasts as and when appropriate.

3.4 Borrowing Strategy

The Council is currently maintaining an under-borrowed position. This means that the capital borrowing need, (the Capital Financing Requirement), has not been fully funded with loan debt as cash supporting the Council's reserves, balances and cash flow has been used as a temporary measure. This strategy is prudent as medium and longer dated borrowing rates are expected to fall from their current levels once prevailing inflation concerns are addressed by tighter near-term monetary policy. That is, Bank Rate remains elevated through to the second half of 2024.

Against this background and the risks within the economic forecast, caution will be adopted with the 2024/25 treasury operations. The Director, Finance will monitor interest rates in financial markets and adopt a pragmatic approach to changing circumstances:

- if it was felt that there was a significant risk of a sharp FALL in borrowing rates, then borrowing will be postponed.
- if it was felt that there was a significant risk of a much sharper RISE in borrowing rates than that currently forecast, fixed rate funding will be drawn whilst interest rates are lower than they are projected to be in the next few years.

Any decisions will be reported to the Finance and Assets Committee at the next available opportunity.

3.5 Policy on Borrowing in Advance of Need

The Council will not borrow more than or in advance of its needs purely in order to profit from the investment of the extra sums borrowed. Any decision to borrow in advance will be within forward approved Capital Financing Requirement estimates and will be considered carefully to ensure that value for money can be demonstrated and that the Council can ensure the security of such funds.

3.6 New Financial Institutions as a Source of Borrowing and / or Types of Borrowing

Currently the PWLB Certainty Rate is set at gilts + 80 basis points. However, consideration may still need to be given to sourcing funding from the following sources for the following reasons:

- Local authorities (primarily shorter dated maturities out to 3 years or so – generally still cheaper than the Certainty Rate).
- Financial institutions (primarily insurance companies and pension funds but also some banks, out of forward dates where the objective is to avoid a “cost of carry” or to achieve refinancing certainty over the next few years).
- UK Municipal Bonds Agency
- UK Infrastructure Bank

Our advisors will keep us informed as to the relative merits of each of these alternative funding sources.

3.7 Approved Sources of Long and Short-term Borrowing

Balance Sheet	Fixed	Variable
PWLB	●	●
UK Municipal Bond Agency	●	●
Local Authorities	●	●
Banks	●	●
Pension Funds	●	●
Insurance Companies	●	●
UK Infrastructure Bank	●	●
Internal (capital receipts & revenue balances)	●	●

4 ANNUAL INVESTMENT STRATEGY

4.1 Investment Policy – Management of Risk

The Department of Levelling Up, Housing and Communities (DLUHC - this was formerly the Ministry of Housing, Communities and Local Government (MHCLG)) and CIPFA have extended the meaning of 'investments' to include both financial and non-financial investments. This report deals solely with treasury (financial) investments, (as managed by the treasury management team). Non-financial investments, essentially the purchase service investments, are covered in the Capital Strategy, (as in the Budget report).

The Council's investment policy has regard to the following: -

- DLUHC's Guidance on Local Government Investments ("the Guidance")
- CIPFA Treasury Management in Public Services Code of Practice and Cross Sectoral Guidance Notes 2021 ("the Code")
- CIPFA Treasury Management Guidance Notes 2021

The Council's investment priorities will be security first, portfolio liquidity second and then yield (return). The Council will aim to achieve the optimum return (yield) on its investments commensurate with proper levels of security and liquidity and with regard to the Council's risk appetite.

In the current economic climate, it is considered appropriate to maintain a degree of liquidity to cover cash flow needs but to also consider "laddering" investments for periods up to 12 months with high credit rated financial institutions, whilst investment rates remain elevated, as well as wider range fund options.

The above guidance from the DLUHC and CIPFA places a high priority on the management of risk. This Council has adopted a prudent approach to managing risk and defines its risk appetite by the following means: -

1. Minimum acceptable **credit criteria** are applied in order to generate a list of highly creditworthy counterparties. This also enables diversification and thus avoidance of concentration risk. The key ratings used to monitor counterparties are the short-term and long-term ratings.
2. **Other information:** ratings will not be the sole determinant of the quality of an institution; it is important to continually assess and monitor the financial sector on both a micro and macro basis and in relation to the economic and political environments in which institutions operate. The assessment will also take account of information that reflects the opinion of the markets. To achieve this consideration the Council will engage with its advisors to maintain a monitor on market pricing such as "**credit default swaps**" and overlay that information on top of the credit ratings.
3. **Other information sources** used will include the financial press, share price and other such information pertaining to the financial sector in order to establish the most robust scrutiny process on the suitability of potential investment counterparties.
4. This Council has defined the list of **types of investment instruments** that the treasury management team are authorised to use. There are two lists in

Appendix 5.4 under the categories of 'specified' and 'non-specified' investments.

Specified investments are those with a high level of credit quality and subject to a maturity limit of one year or have less than a year left to run to maturity, if originally they were classified as being non-specified investments solely due to the maturity period exceeding one year.

Non-specified investments are those with less high credit quality, may be for periods in excess of one year, and/or are more complex instruments which require greater consideration by members and officers before being authorised for use.

5. **Non-specified and loan investment limits.** The Council has determined that it will set a limit to the maximum exposure of the total treasury management investment portfolio to non-specified treasury management investments of 0%.
6. **Lending limits**, (amounts and maturity), for each counterparty will be set through applying the matrix table in paragraph 4.2.
7. **Transaction limits** are set for each type of investment in 4.2.
8. This Council will set a limit for its investments which are invested for **longer than 365 days**, (see paragraph 4.4).
9. Investments will only be placed with counterparties from countries with a specified minimum **sovereign rating**, (see paragraph 4.3).
10. This Council has engaged **external consultants**, (see paragraph 1.5), to provide expert advice on how to optimise an appropriate balance of security, liquidity and yield, given the risk appetite of this Council in the context of the expected level of cash balances and need for liquidity throughout the year.
11. All investments will be denominated in **sterling**.
12. As a result of the change in accounting standards for 2023/24 under IFRS 9, this Council will consider the implications of investment instruments which could result in an adverse movement in the value of the amount invested and resultant charges at the end of the year to the General Fund. (In November 2018, the MHCLG, concluded a consultation for a temporary override to allow English local authorities time to adjust their portfolio of all pooled investments by announcing a statutory override to delay implementation of IFRS 9 for five years ending 31.3.23. More recently, a further extension to the over-ride to 31.3.25 has been agreed by Government.

However, this Council will also pursue **value for money** in treasury management and will monitor the yield from investment income against appropriate benchmarks for investment performance, (see paragraph 4.5). Regular monitoring of investment performance will be carried out during the year.

Changes in risk management policy from last year.

The above criteria are unchanged from last year.

4.2 Creditworthiness Policy

This Council applies the creditworthiness service provided by the Link Group. This service employs a sophisticated modelling approach utilising credit ratings from the three main credit rating agencies - Fitch, Moody's and Standard & Poor's. The credit ratings of counterparties are supplemented with the following overlays: -

1. "watches" and "outlooks" from credit rating agencies;
2. CDS spreads that may give early warning of changes in credit ratings;
3. sovereign ratings to select counterparties from only the most creditworthy countries.

This modelling approach combines credit ratings, and any assigned Watches and Outlooks, in a weighted scoring system which is then combined with an overlay of CDS spreads. The end-product of this is a series of colour coded bands which indicate the relative creditworthiness of counterparties. These colour codes are used by the Council to determine the suggested duration for investments. The Council will, therefore, use counterparties within the following durational bands:

- Yellow 5 years *
- Dark pink 5 years for Ultra-Short Dated Bond Funds with a credit score of 1.25
- Light pink 5 years for Ultra-Short Dated Bond Funds with a credit score of 1.5
- Purple 2 years
- Blue 1 year (only applies to nationalised or semi nationalised UK Banks)
- Orange 1 year
- Red 6 months
- Green 100 days
- No colour not to be used

The Link creditworthiness service uses a wider array of information other than just primary ratings. Furthermore, by using a risk weighted scoring system, it does not give undue preponderance to just one agency's ratings.

Typically, the minimum credit ratings criteria the Council uses will be a short-term rating (Fitch or equivalents) of F1 and a long-term rating of A-. There may be occasions when the counterparty ratings from one rating agency are marginally lower than these ratings but may still be used. In these instances, consideration will be given to the whole range of ratings available, or other topical market information, to support their use.

All credit ratings will be monitored weekly. The Council is alerted to changes to ratings of all three agencies through its use of the Link creditworthiness service.

- if a downgrade results in the counterparty / investment scheme no longer meeting the Council's minimum criteria, its further use as a new investment will be withdrawn immediately.
- in addition to the use of credit ratings the Council will be advised of information in movements in Credit Default Swap spreads against the iTraxx European Senior Financials benchmark and other market data on a daily basis via its Passport website, provided exclusively to it by Link. Extreme market movements may result in downgrade of an institution or removal from the Council's lending list.

Sole reliance will not be placed on the use of this external service. In addition, this Council will also use market data and market information, as well as information on any external support for banks to help support its decision-making process.

Y	Pi1	Pi2	P	B	O	R	G	N/C
1	1.25	1.5	2	3	4	5	6	7
Up to 5yrs	Up to 5yrs	Up to 5yrs	Up to 2yrs	Up to 1yr	Up to 1yr	Up to 6mths	Up to 100days	No Colour

The following counterparty limits were agreed in the 2021/22 Treasury Management Strategy and will remain in place during 2024/25.

- £6 million with counterparties rated up to six months (red on the above scale) and above time duration limit on the approved weekly list.
- £5 million with Money Market Funds

Creditworthiness

Significant levels of downgrades to Short and Long-Term credit ratings have not materialised since the crisis in March 2020. In the main, where they did change, any alterations were limited to Outlooks. Nonetheless, when setting minimum sovereign debt ratings, this Council will not set a minimum rating for the UK.

CDS prices

Although bank CDS prices, (these are market indicators of credit risk), spiked upwards during the days of the Truss/Kwarteng government in the autumn of 2022, they have returned to more average levels since then. However, sentiment can easily shift, so it will remain important to undertake continual monitoring of all aspects of risk and return in the current circumstances. Link monitor CDS prices as part of their creditworthiness service to local authorities and the Council has access to this information via its Link-provided Passport portal.

Limits

Due care will be taken to consider the exposure of the Council's total investment portfolio to non-specified investments, countries, groups and sectors.

- Non-specified treasury management investment limit.** The Council has determined that it will not engage in non-specified treasury management investments.
- Country limit.** The Council has determined that it will only use approved counterparties from the UK and from countries with a **minimum sovereign credit rating of AA-** from Fitch (or equivalent). The list of countries that qualify using this credit criteria as at the date of this report are shown in Appendix 5.4. This list will be added to, or deducted from, by officers should ratings change in accordance with this policy.

Other limits. In addition: -

- no more than 5% will be placed with any non-UK country at any time;
- limits in place above will apply to a group of companies/institutions;
- sector limits will be monitored regularly for appropriateness.

4.3 Investment Strategy

In-house funds. Investments will be made with reference to the core balance and cash flow requirements and the outlook for short-term interest rates (i.e., rates for investments up to 12 months). Greater returns are usually obtainable by investing for longer periods. The current shape of the yield curve suggests that is the case at present, but there is the prospect of Bank Rate having peaked in the second half of 2023 and possibly reducing as

early as the second half of 2024 so an agile investment strategy would be appropriate to optimise returns.

Accordingly, while a proportion of the cash held is required in order to manage the ups and downs of cash flow, where cash sums can be identified that could be invested for longer periods, the value to be obtained from longer-term investments will be carefully assessed.

Investment returns expectations.

The current forecast shown in paragraph 3.3, includes a forecast for Bank Rate to have peaked at 5.25% in Q4 2023.

The suggested budgeted investment earnings rates for returns on investments placed for periods up to about three months during each financial year are as follows: -

Average earnings in each year	
2023/24 (residual)	5.30%
2024/25	4.55%
2025/26	3.10%
2026/27	3.00%
2027/28	3.25%
Years 6 to 10	3.25%
Years 10+	3.25%

As there are so many variables at this time, caution must be exercised in respect of all interest rate forecasts.

For its cash flow generated balances, the Council will seek to utilise its business reserve instant access and notice accounts, Money Market Funds and short-dated deposits, (overnight to six months), in order to benefit from the compounding of interest.

Investment treasury indicator and limit - total principal funds invested for greater than 365 days. These limits are set with regard to the Council's liquidity requirements and to reduce the need for early sale of an investment and are based on the availability of funds after each year-end.

The Council is asked to approve the following treasury indicator and limit: -

Upper limit for principal sums invested for longer than 365 days			
£000	2024/25	2025/26	2026/27
Principal sums invested for longer than 365 days	£2,000	£2,000	£2,000
Current investments as at 31 st December 2023 in excess of 1 year maturing in each year	£0	£0	£0

4.4 Investment Performance / Risk Benchmarking

These benchmarks are simple guides to maximum risk, so they may be breached from time to time, depending on movements in interest rates and counterparty criteria. The purpose of the benchmark is that officers will monitor the current and trend position and amend the operational strategy to manage risk as conditions change. Any breach of the benchmarks will be reported, with supporting reasons in the mid-year or Annual Report.

Security - The Council's main priority is the security of its capital, and therefore security risk continues to be its main focus, with the process for securing this detailed in Section 4.1 of this report.

This is measured / benchmarked by the use of a Historic Risk of Default calculation provided to us by Link Asset Services. The calculation is a proxy for the average percentage risk for each investment based on over 30 years of data provided by Fitch, Moody's and S&P. It simply provides a calculation of the possibility of average default against the historical default rates, adjusted for the time period within each year according to the maturity of the investment. At the end of November 2022 our calculated Historic Risk of Default was 0.008% as our cash was in either Money Market Funds, deposits with appropriately rated banks and a liquid call account with NatWest. As this situation is not expected to change in 2023/24, then the risk remains very small.

Liquidity – in respect of this area the Council seeks to maintain:

- No Bank overdraft
- Liquid short-term deposits of at least £5 million available with a week's notice.

Yield - local measures of yield benchmarks are

- Investments – internal returns above the 7-day SONIA compounded rate

4.5 End of Year Investment Report

At the end of the financial year, the Council will report on its investment activity as part of its Annual Treasury Report.

5 APPENDICES

1. Prudential and treasury indicators
2. Economic background
3. Treasury management practice 1 – credit and counterparty risk management
4. Approved countries for investments
5. Treasury management scheme of delegation
6. The treasury management role of the Section 151 officer

5.1 THE CAPITAL PRUDENTIAL AND TREASURY INDICATORS 2024/25 – 2026/27

The Council's capital expenditure plans are the key driver of treasury management activity. The output of the capital expenditure plans is reflected in the prudential indicators, which are designed to assist members' overview and confirm capital expenditure plans.

5.1.1 Affordability Prudential Indicators

The previous sections cover the overall capital and control of borrowing prudential indicators, but within this framework prudential indicators are required to assess the affordability of the capital investment plans. These provide an indication of the impact of the capital investment plans on the Council's overall finances. The Council is asked to approve the following indicators: -

Ratio of Financing Costs to Net Revenue Stream

This indicator identifies the trend in the cost of capital, (borrowing and other long-term obligation costs net of investment income), against the net revenue stream.

%	2022/23 Actual	2023/24 Estimate	2024/25 Estimate	2025/26 Estimate	2026/27 Estimate
Annual Charge	(5.92%)	(6.11%)	4.50%	3.07%	0.88%

The estimates of financing costs include current commitments and the proposals in this budget report.

5.2 ECONOMIC BACKGROUND

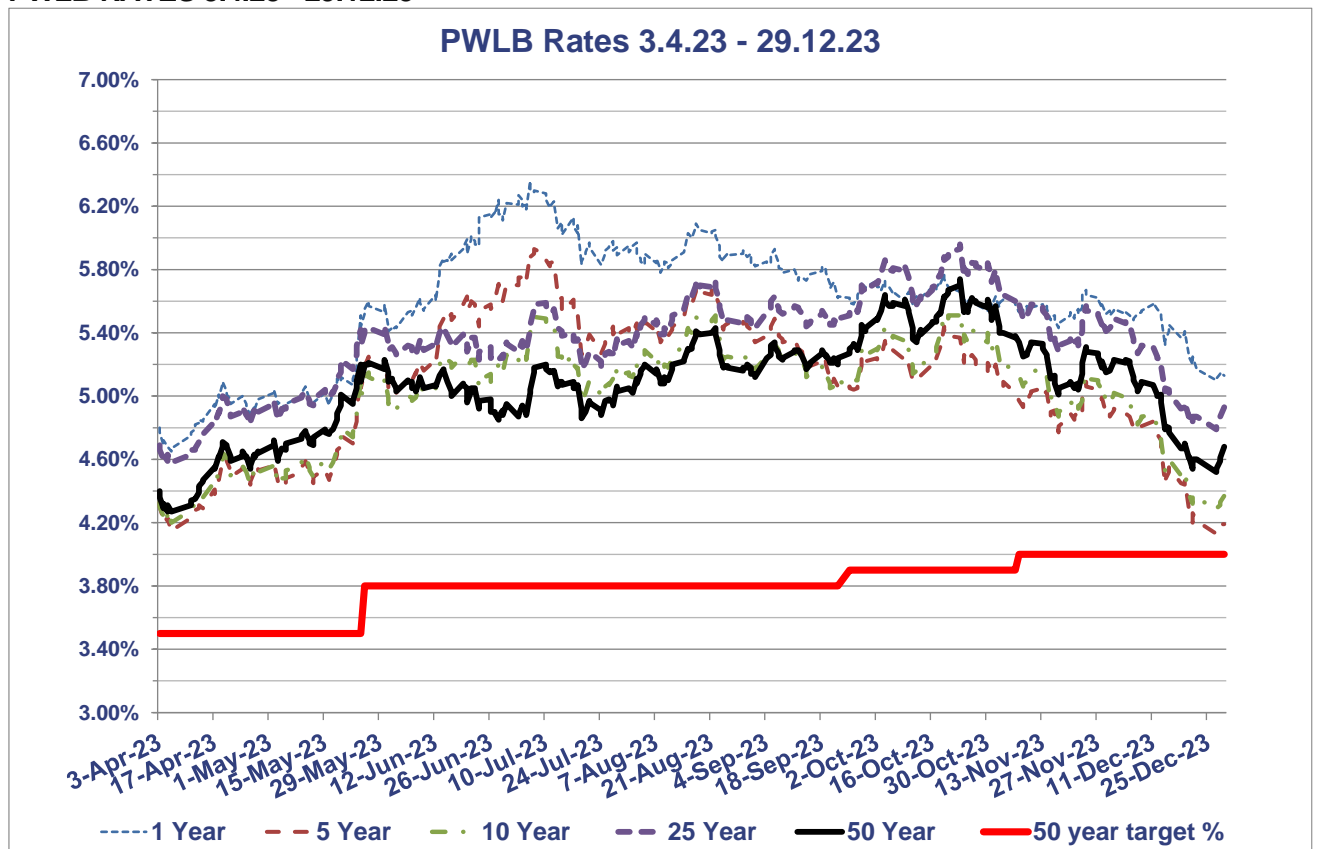
- The third quarter of 2023/24 saw:
 - A 0.3% m/m decline in real GDP in October, potentially partly due to unseasonably wet weather, but also due to the ongoing drag from higher interest rates. Growth for the second quarter, ending 30th September, was revised downwards to -0.1% and growth on an annual basis was also revised downwards, to 0.3%;
 - A sharp fall in wage growth, with the headline 3myy rate declining from 8.0% in September to 7.2% in October, although the ONS “experimental” rate of unemployment has remained low at 4.2%;
 - CPI inflation continuing on its downward trajectory, from 8.7% in April to 4.6% in October, then again to 3.9% in November;
 - Core CPI inflation decreasing from April and May’s 31 years’ high of 7.1% to 5.1% in November, the lowest rate since January 2022;
 - The Bank of England holding Bank Rate at 5.25% in November and December;
 - A steady fall in 10-year gilt yields as investors revised their interest rate expectations lower.
- The revision of GDP data in Q2 to a 0.1% q/q fall may mean the mildest of mild recessions has begun. Indeed, real GDP in October fell 0.3% m/m which does suggest that the economy may stagnate again in Q3. The weakness in October may partly be due to the unseasonably wet weather. That said, as the weakness was broad based it may also be the case that the ongoing drag from higher interest rates is more than offsetting any boost from the rise in real wages.
- However, the rise in the flash composite activity Purchasing Managers Index, from 50.7 in November to 51.7 in December, did increase the chances of the economy avoiding a contraction in Q3. The improvement was entirely driven by the increase in the services activity balance from 50.9 to 52.7. (Scores above 50 point to expansion in the economy, although only tepid in this instance.) The press release noted that this was primarily driven by a revival in consumer demand in the technological and financial services sectors. This chimes with the further improvement in the GfK measure of consumer confidence in December, from -24 to -22. The services PMI is now consistent with non-retail services output growing by 0.5% q/q in Q3, but this is in stark contrast to the manufacturing sector where the output balance slumped from 49.2 to 45.9 and, at face value, the output balance is consistent with a 1.5% q/q fall in manufacturing output in Q3.
- The 0.3% m/m fall in retail sales volumes in October means that after contracting by 1.0% q/q (which was downwardly revised from -0.8% q/q) in Q2, retail activity remained weak at the start of Q3. That suggests higher interest rates are taking a bigger toll on real consumer spending.
- Higher interest rates have filtered through the financial channels and weakened the housing market but, overall, it remains surprisingly resilient with the Halifax house price index recently pointing to a 1.7% year on year increase whilst Nationwide’s December data pointed to a -1.8% year on year decrease. However, the full weakness in real consumer spending and real business investment has yet to come as currently it is estimated that around two thirds to a half of the impact of higher interest rates on household interest payments has yet to be felt.

- Overall, we expect real GDP growth to remain subdued throughout 2024 as the drag from higher interest rates is protracted but a fading of the cost-of-living crisis and interest rate cuts in the second half of 2024 will support a recovery in GDP growth in 2025.
- The labour market remains tight by historical standards, but the sharp fall in wage growth seen in October will reinforce the growing belief in markets that interest rates will be cut mid-2024. Wage growth eased in October much faster than the consensus expected. Total earnings fell by 1.6% m/m, which meant the headline 3myy rate eased from 8.0% in September to 7.2% in October. This news will be welcomed by the Bank of England. Indeed, the timelier three-month annualised rate of average earnings growth fell from +2.4% to -1.2%. Excluding bonuses, it fell from 5.3% to 2.0%. Furthermore, one of the Bank's key barometers of inflation persistence, regular private sector pay growth, dropped from 7.9% 3myy to 7.3%, which leaves it comfortably on track to fall to 7.2% by December, as predicted by the Bank in November.
- The fall in wage growth occurred despite labour demand being stronger in October than expected. The three-month change in employment eased only a touch from +52,000 in September to +50,000 in October. But resilient labour demand was offset by a further 63,000 rise in the supply of workers in the three months to October. That meant labour supply exceeded its pre-pandemic level for the first time, and the unemployment rate remained at 4.2% in October. In the three months to November, the number of job vacancies fell for the 17th month in a row, from around 959,000 in October to around 949,000. That has reduced the vacancy to unemployment ratio as demand for labour eases relative to supply, which may support a further easing in wage growth in the coming months.
- CPI inflation fell from 6.7% in September to 4.6% in October, and then again to 3.9% in November. Both these falls were bigger than expected and there are clear signs of easing in domestic inflationary pressures. The fall in core CPI inflation from 5.7% to 5.1% in November was bigger than expected (consensus forecast 5.6%). That's the lowest rate since January 2022. Some of the decline in core inflation was due to the global influence of core goods inflation, which slowed from 4.3% to 3.3%. But some of it was due to services inflation falling from 6.6% to 6.3%. The Bank views the latter as a key barometer of the persistence of inflation and it came in further below the Bank's forecast of 6.9% in its November Monetary Policy Report. This will give the Bank more confidence that services inflation is now on a firmly downward path.
- The Bank of England sprung no surprises with its December monetary policy committee (MPC) meeting, leaving interest rates at 5.25% for the third time in a row and pushing back against the prospect of near-term interest rate cuts. The Bank continued to sound hawkish, with the MPC maintaining its tightening bias saying that "further tightening in monetary policy would be required if there were evidence of more persistent inflationary pressures". And it stuck to the familiar script, saying that policy will be "sufficiently restrictive for sufficiently long" and that "monetary policy is likely to need to be restrictive for an extended period of time". In other words, the message is that the MPC is not yet willing to endorse investors' expectations that rates will be cut as soon as May 2024.
- Looking ahead, our colleagues at Capital Economics forecast that the recent downward trends in CPI and core inflation will stall over the next few months before starting to decline more decisively again in February. That explains why we think the Bank of England won't feel comfortable cutting interest rates until H2 2024.

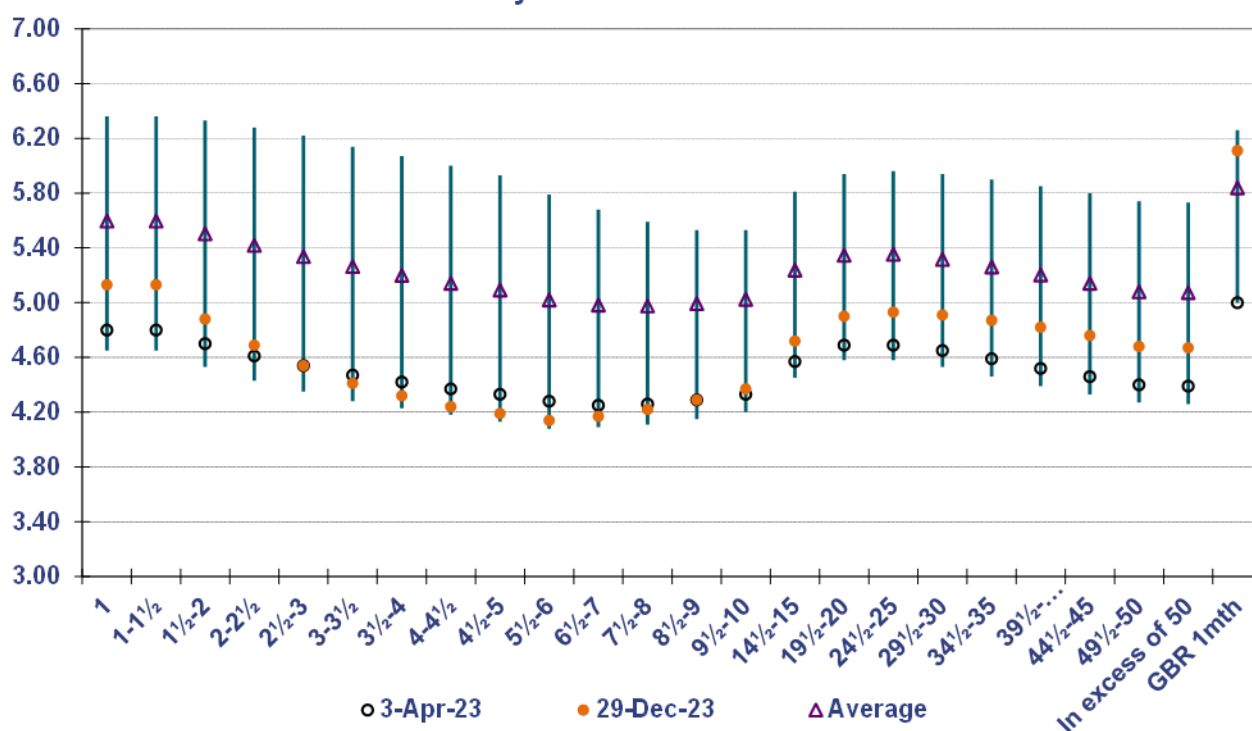
- The fall in UK market interest rate expectations in December has driven most of the decline in 10-year gilt yields, which have fallen in line with 10-year US Treasury and euro-zone yields. 10-year gilt yields have fallen from 4.68% in October 2023 to around 3.70% in early January, with further declines likely if the falling inflation story is maintained.
- Investors' growing expectations that the Fed will cut interest rates soon has led to an improvement in risk sentiment, which has boosted the pound and other risky assets. In addition, the rise in the pound, from \$1.21 in November to \$1.27 now, has also been supported by the recent relative decline in UK wholesale gas prices.
- The further fall in 10-year real gilt yields in December has supported the recent rise in the FTSE 100. That said, the index remains 5% below its record high in February 2023. This modest rise in equities appears to have been mostly driven by strong performances in the industrials and rate-sensitive technology sectors. But UK equities have continued to underperform US and euro-zone equities. The FTSE 100 has risen by 2.2% in December, while the S&P 500 has risen by 3.8%. This is partly due to lower energy prices, which have been a relatively bigger drag on the FTSE 100, due to the index's high concentration of energy companies.

In the chart below, the rise in gilt yields across the curve in the first half of 2023/24, and therein PWLB rates, is clear to see, prior to the end of year rally based on a mix of supportive domestic and international factors.

PWLB RATES 3.4.23 - 29.12.23



PWLB Certainty Rate Variations 3.4.23 to 29.12.23



HIGH/LOW/AVERAGE PWLB RATES FOR 3.4.23 – 29.12.23

	1 Year	5 Year	10 Year	25 Year	50 Year
Low	4.65%	4.13%	4.20%	4.58%	4.27%
Date	06/04/2023	27/12/2023	06/04/2023	06/04/2023	05/04/2023
High	6.36%	5.93%	5.53%	5.96%	5.74%
Date	06/07/2023	07/07/2023	23/10/2023	23/10/2023	23/10/2023
Average	5.60%	5.09%	5.03%	5.35%	5.08%
Spread	1.71%	1.80%	1.33%	1.38%	1.47%

MPC meetings 2nd November and 14th December 2023

- On 2nd November, the Bank of England's Monetary Policy Committee (MPC) voted to keep Bank Rate on hold at 5.25%, and on 14th December reiterated that view. Both increases reflected a split vote, the latter by 6 votes to 3, with the minority grouping voting for an increase of 0.25% as concerns about "sticky" inflation remained in place.
- Nonetheless, with UK CPI inflation now at 3.9%, and core inflating beginning to moderate (5.1%), markets are voicing a view that rate cuts should begin in Q1 2024/25, some way ahead of the indications from MPC members. Of course, the data will be the ultimate determinant, so upcoming publications of employment, wages and inflation numbers will be of particular importance, and on-going volatility in Bank Rate expectations and the gilt yield curve can be expected.
- In addition, what happens outside of the UK is also critical to movement in gilt yields. The US FOMC has kept short-term rates in the range of 5.25%-5.50%, whilst the ECB has moved its Deposit rate to a probable peak of 4%. Markets currently expect both central banks to start cutting rates in 2024.

5.3 TREASURY MANAGEMENT PRACTICE – CREDIT AND COUNTERPARTY RISK MANAGEMENT

SPECIFIED INVESTMENTS: All such investments will be sterling denominated, with **maturities up to a maximum of 1 year**, meeting the minimum ‘high’ quality criteria where applicable. (Non-specified investments which would be specified investments apart from originally being for a period longer than 12 months, will be classified as being specified once the remaining period to maturity falls to under twelve months.)

NON-SPECIFIED INVESTMENTS: These are any investments which do not meet the specified investment criteria. The Council will not engage in any non-specific investments.

It should be noted that any funding provided to East Cambridgeshire Trading Company or East Cambs CLT will be given as a capital loan and treated as capital expenditure. These are not investments, as defined in the Strategy document, although clearly the Council does receive a return on the amount loaned.

SPECIFIED INVESTMENTS

A variety of investment instruments will be used, subject to the credit quality of the institution, and depending on the type of investment made, it will fall into one of the above categories.

The criteria, time limits and monetary limits applying to institutions or investment vehicles are:

	Minimum credit criteria / colour band	£ limit per institution	Maximum maturity period
DMADF (Debt Management Account Deposit Facility) – UK Government	Yellow	£6 million	6 months (max. is set by the DMO (Debt Management Office of HM Treasury))
UK Gilts	Yellow	£6 million	5 years
Money Market Funds CNAV	AAA	£5 million	Liquid
Money Market Funds LNAV	AAA	£5 million	Liquid
Money Market Funds VNAV	AAA	£5 million	Liquid
Local Authorities	Yellow	£5 million	1 year
Term Deposits with Banks and Building Societies	Purple Blue Orange Red Green No Colour	£6 million £6 million £6 million £6 million Nil Nil	12 months 12 months 12 months 6 months Not for use Not for use

5.4 APPROVED COUNTRIES FOR INVESTMENTS

This list is based on those countries which have sovereign ratings of AA- or higher, (we show the lowest rating from Fitch, Moody's and S&P) and also, (except - at the time of writing - for Hong Kong and Luxembourg), have banks operating in sterling markets which have credit ratings of green or above in the Link creditworthiness service.

Based on lowest available rating

AAA

- Australia
- Denmark
- Germany
- Netherlands
- Norway
- Singapore
- Sweden
- Switzerland

AA+

- Canada
- Finland
- U.S.A.

AA

- Abu Dhabi (UAE)

AA-

- Belgium
- France
- Qatar
- U.K.

5.5 TREASURY MANAGEMENT SCHEME OF DELEGATION

(i) Full Council

- receiving and reviewing reports on treasury management policies, practices and activities;
- approval of annual strategy.

(ii) Finance and Assets Committee (as the responsible Committee)

- approval of/amendments to the organisation's adopted clauses, treasury management policy statement and treasury management practices;
- budget consideration and approval;
- approval of the division of responsibilities;
- receiving and reviewing regular monitoring reports and acting on recommendations;
- approving the selection of external service providers and agreeing terms of appointment.

(iii) Director, Finance (as the person with responsibility for the treasury function)

- reviewing the treasury management policy and procedures and making recommendations to the responsible Committee.

5.6 THE TREASURY MANAGEMENT ROLE OF THE SECTION 151 OFFICER

The Section 151 (responsible) officer

- recommending clauses, treasury management policy/practices for approval, reviewing the same regularly, and monitoring compliance;
- submitting regular treasury management policy reports;
- submitting budgets and budget variations;
- receiving and reviewing management information reports;
- reviewing the performance of the treasury management function;
- ensuring the adequacy of treasury management resources and skills, and the effective division of responsibilities within the treasury management function;
- ensuring the adequacy of internal audit, and liaising with external audit;
- recommending the appointment of external service providers;
- preparation of a Capital Strategy to include capital expenditure, capital financing, non-financial investments and treasury management, with a long-term timeframe;
- ensuring that the Capital Strategy is prudent, sustainable, affordable and prudent in the long term and provides value for money;
- ensuring that due diligence has been carried out on all treasury investments and is in accordance with the risk appetite of the Authority;
- ensure that the Authority has appropriate legal powers to undertake expenditure on non-financial assets and their financing;
- ensuring the proportionality of all investments so that the Authority does not undertake a level of investing which exposes the Authority to an excessive level of risk compared to its financial resources;
- ensuring that an adequate governance process is in place for the approval, monitoring and ongoing risk management of all non-financial investments and long-term liabilities;
- provision to members of a schedule of all non-treasury investments including material investments in subsidiaries, joint ventures, loans and financial guarantees;
- ensuring that members are adequately informed and understand the risk exposures taken on by the Authority;
- ensuring that the Authority has adequate expertise, either in house or externally provided, to carry out the above;
- creation of Treasury Management Practices which specifically deal with how non treasury investments will be carried out and managed, to include the following: -
 - Risk management (TMP1 and schedules), including investment and risk management criteria for any material non-treasury investment portfolios;
 - Performance measurement and management (TMP2 and schedules), including methodology and criteria for assessing the performance and success of non-treasury investments;
 - Decision making, governance and organisation (TMP5 and schedules), including a statement of the governance requirements for decision making in relation to non-treasury investments; and arrangements to ensure that appropriate professional due diligence is carried out to support decision making;

- Reporting and management information (TMP6 and schedules), including where and how often monitoring reports are taken;
- Training and qualifications (TMP10 and schedules), including how the relevant knowledge and skills in relation to non-treasury investments will be arranged.