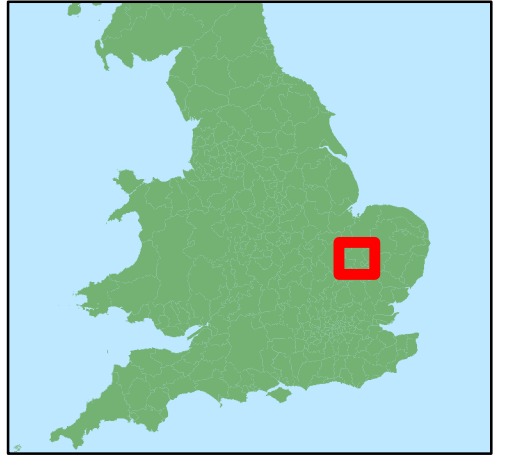


**Key Plan**



**Legend**

- Council boundary
- Bottisham / Quay / Wilbraham
- Burwell Lode / Tributaries
- Cam / Tributaries
- Cottenham Lode / Tributaries
- Counterdrain / Cranbrook
- Delph
- Kirtling Brook
- Lark
- Lea Brook / Kennett
- Little Ouse
- Old West
- Reach Lode
- River Great Ouse and Backwaters
- Soham / Snail / Tributaries
- Swaffham Lode
- Ten Mile / Ely Ouse
- Tidal River / 100Ft
- Wicken / Monks / New River
- Non Main Rivers



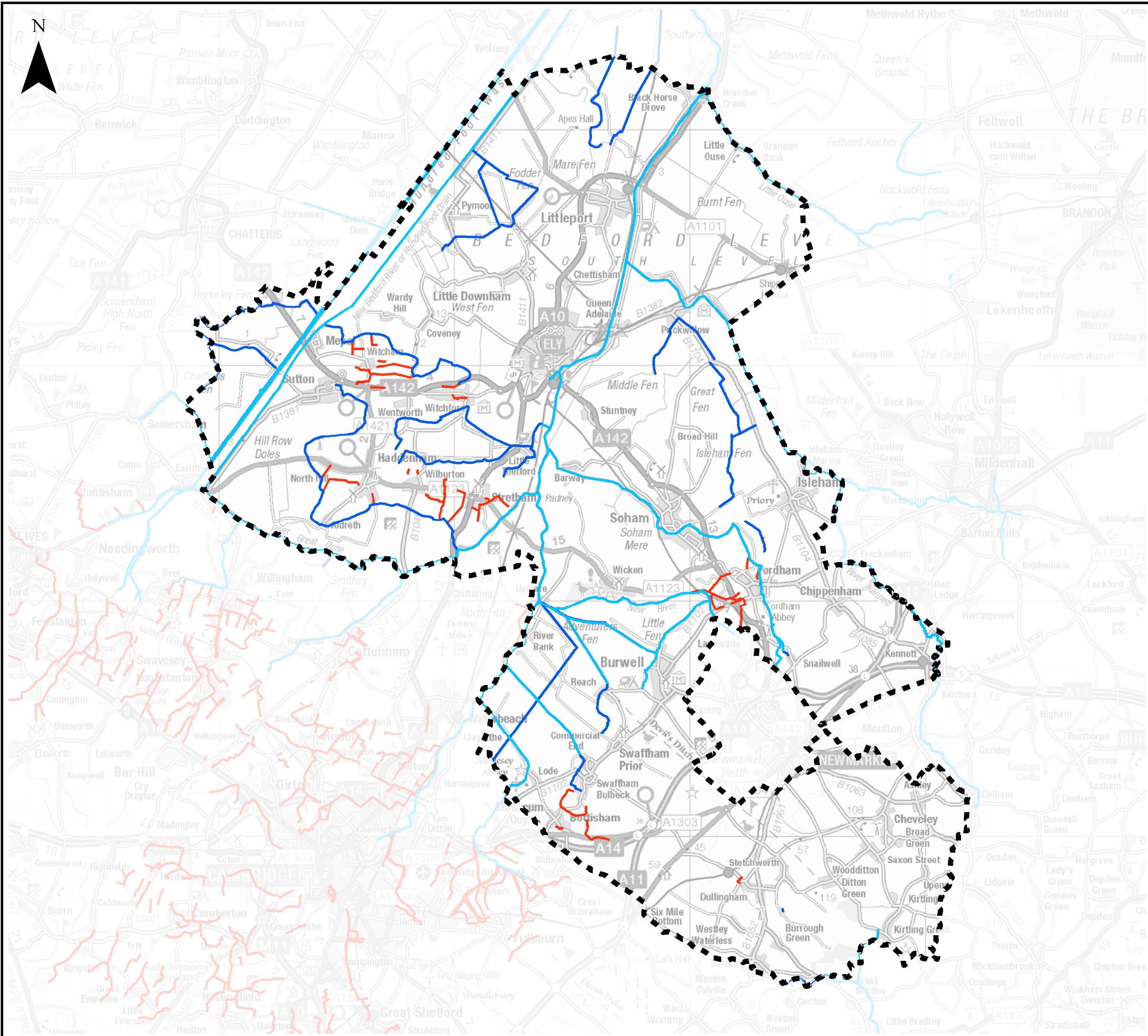
| REF | Date     | Comments |
|-----|----------|----------|
| A   | Aug 2016 | Draft    |
| B   | Feb 2016 | Final    |
| C   |          |          |

Reproduced from Ordnance Survey mapping with the permission of Ordnance Survey on behalf of the Controller of Her Majesty's Stationary Office. © Crown copyright and database rights 2017.

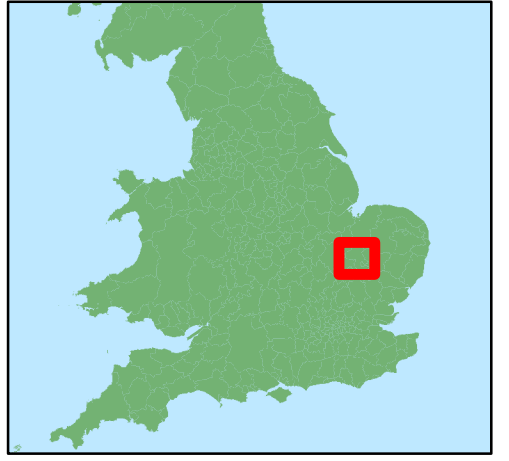
**EAST CAMBRIDGESHIRE DISTRICT COUNCIL**  
**APPENDIX A.1**  
**EAST CAMBRIDGESHIRE MAIN RIVERS**

This document is the property of Jeremy Benn Associates Ltd. It shall not be reproduced in whole or in part, nor disclosed to a third party, without the permission of Jeremy Benn Associates Ltd.





**Key Plan**



**Legend**

-  Council boundary
-  Non Main Rivers
-  Awarded watercourses
-  Main Rivers



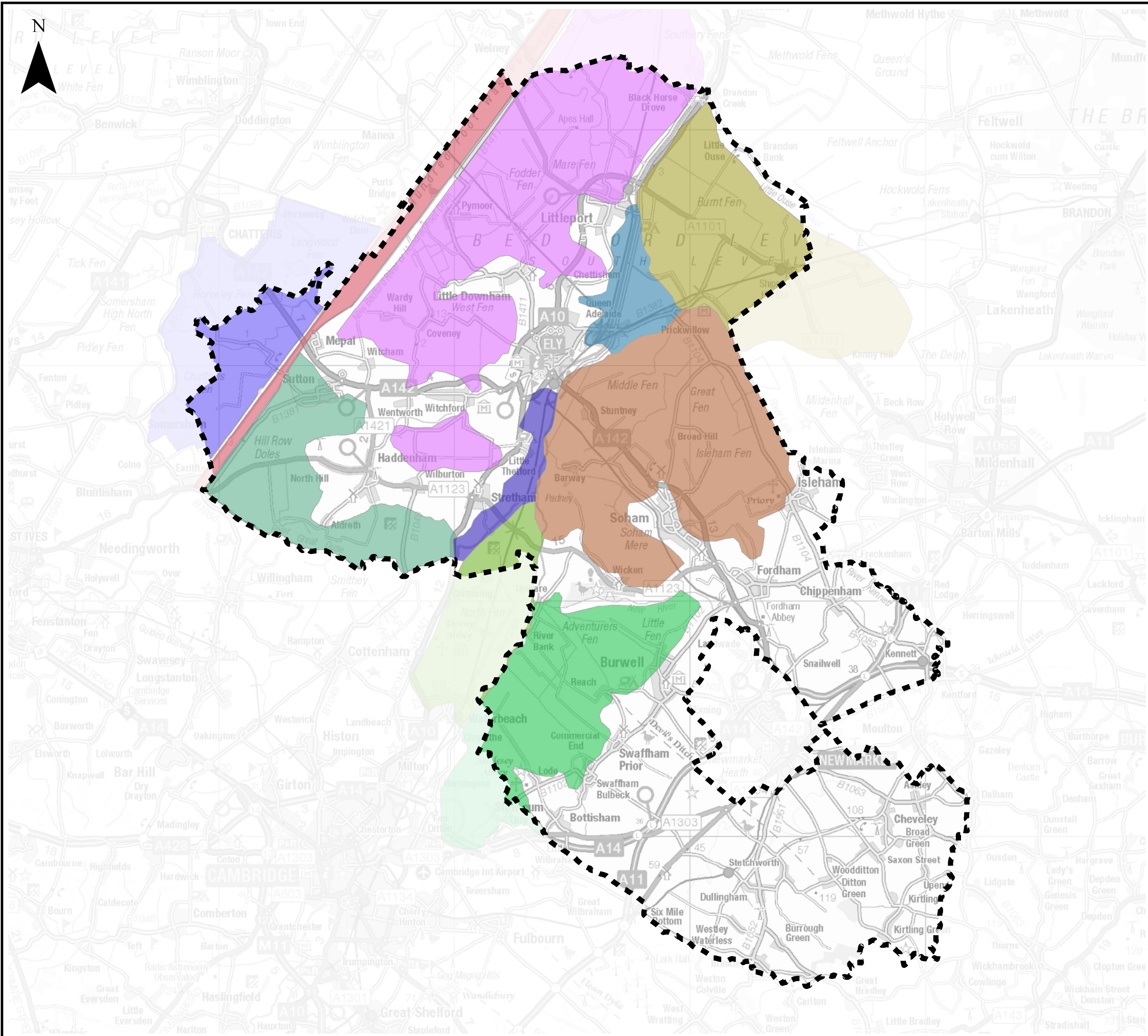
| REF | Date     | Comments |
|-----|----------|----------|
| A   | Aug 2016 | Draft    |
| B   | Feb 2016 | Final    |
| C   |          |          |

Reproduced from Ordnance Survey mapping with the permission of Ordnance Survey on behalf of the Controller of Her Majesty's Stationary Office. © Crown copyright and database rights 2017.

**EAST CAMBRIDGESHIRE DISTRICT COUNCIL**  
**APPENDIX A.2**  
**EAST CAMBRIDGESHIRE NON MAIN RIVERS**

This document is the property of Jeremy Benn Associates Ltd. It shall not be reproduced in whole or in part, nor disclosed to a third party, without the permission of Jeremy Benn Associates Ltd.






**Key Plan**



**Legend**

-  Council boundary
- Internal Drainage Boards**
-  Burnt Fen
-  Cawdle Fen
-  Littleport and Downham
-  Middle Fen and Mere
-  Padnal and Waterden
-  Swaffham
-  Waterbeach Level
-  Haddenham Level
-  Hundred Foot Washes
-  Sutton & Mepal



| REF | Date     | Comments |
|-----|----------|----------|
| A   | Aug 2016 | Draft    |
| B   | Feb 2016 | Final    |
| C   |          |          |

Reproduced from Ordnance Survey mapping with the permission of Ordnance Survey on behalf of the Controller of Her Majesty's Stationary Office. © Crown copyright and database rights 2017.

**EAST CAMBRIDGESHIRE DISTRICT COUNCIL**

**APPENDIX A.3 EAST CAMBRIDGESHIRE INTERNAL DRAINAGE BOARDS**

This document is the property of Jeremy Benn Associates Ltd. It shall not be reproduced in whole or in part, nor disclosed to a third party, without the permission of Jeremy Benn Associates Ltd.

