



VIEW FROM KETTLESWORTH DROVE existing

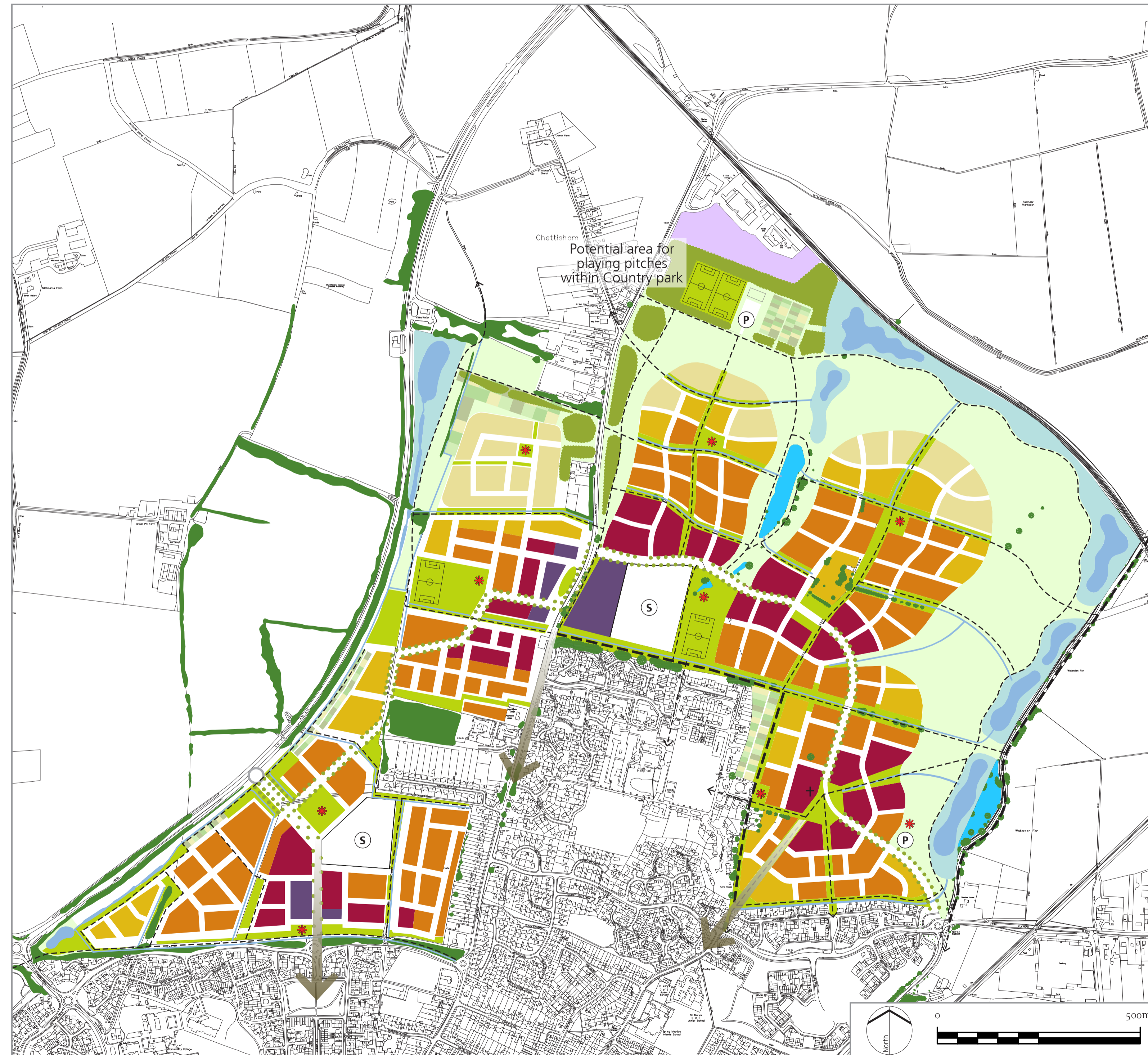
### Welcome

Welcome to this exhibition, which shows design proposals for the new North Ely Park. This large area of parkland will be delivered as part of the planned North Ely housing developments, but will be a new park for Ely, accessible to you all. While the current planning applications are going through the planning process, East Cambridgeshire District Council would like your help in developing a future design and layout for this exciting new park.

The Council has commissioned consultants Sheils Flynn to develop initial design proposals, which are presented in this exhibition. You are warmly invited to have your say on the proposals. Please help us to provide a fabulous new park that will complement existing facilities in Ely and also meet the needs of the existing and new residents.

# North Ely Park

## introduction



- LEGEND
- Urban village
  - Suburbia
  - Green living
  - Arcadia
  - Local centre
  - Employment area
  - Ⓢ Schools
  - Ⓟ Parking
  - + Place of worship / community hall (Indicative location)
  - Long views to Cathedral
  - Country park
  - Community orchard / woodland
  - Allotments / paddocks
  - Avenue
  - Green corridors
  - \* Neighbourhood play area
  - Existing footpaths / bridleways
  - - - Proposed footpaths / cycleways
  - Surface water attenuation
  - Existing woodland / hedgerow
  - Existing lake

This drawing is an extract from the Joint Strategic Masterplan. It is also incorporated within the North Ely Supplementary Planning Document which sets out guidelines for the development of an urban extension to the north of Ely. It will be used as a guide to assess and determine each planning application.

- The plan for North Ely includes:
- Up to 3,000 dwellings
  - 30% affordable housing
  - 30-40% of the site to be multi functional green space
  - 2 primary schools
  - Sufficient employment uses to deliver 1,300-1,500 jobs
  - 2 local centres providing retail and community uses
  - Two small local centres, providing top-up shopping and community facilities
  - A new North Ely Park
  - Play areas for young children and teenagers
  - Allotments and community orchards

This drawing may contain: Ordnance Survey material by permission of Ordnance Survey on behalf of the Controller of Her Majesty's Stationery Office © Crown Copyright 2011. All rights reserved. Reference number 100002215.  
OS Open data © Crown copyright and database right 2006 | Aerial Photography © Bing Maps